

Mormon Battalion, LDS Church Longest Infantry March Marker

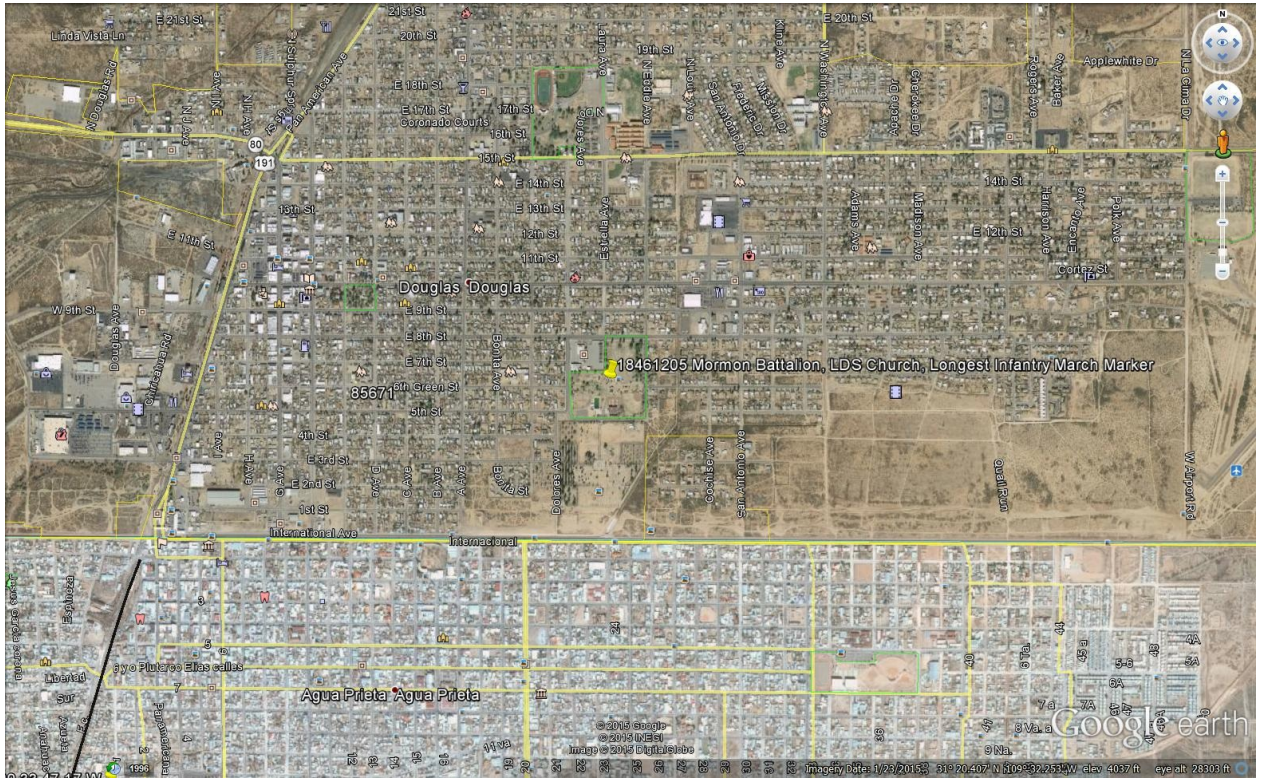
Douglas, Cochise County, Arizona

TRAIL SEGMENT
2. Main Command

TRAIL DATE
5 Dec 1846

DEDICATION DATE
1960

GPS COORDINATES
31° 20.428' N
109° 32.307' W
WGS84



Google Earth™ Image, 23 January 2015



by Bill Kirchner, 2 March 2010



by Bill Kirchner, 2 March 2010



by Bill Kirchner, 2 March 2010

Description

Triangular tan concrete marker with embedded gold painted slate plaque. Contrary to the writing on the monument, the Mormon Battalion actually camped on 5 December 1846 at Agua Prieta, 1.8 miles to the SW and 0.7 miles south of the present United States-Mexico border, crossing back into the present United States west of Douglas at about the location of the Phelps Dodge Smelter tailings dumps.

Driving Directions

This marker is located in Douglas, Arizona, 11 blocks East of Pan American Avenue (U.S. Highway 191) and 6 blocks North of the United States-Mexico border, in the center of Veterans Memorial Park (aka 8th Street Park) next to the National Guard Armory, bounded by East 8th Street on the North, Florida Avenue on the East, East 5th Street on the South, and Dolores Avenue on the West.

Inscription

Plaque 1 of 1.



by Bill Kirchner, 2 March 2010

MORMON
LDS CHURCH
BATTALION
LONGEST INFANTRY
MARCH ON RECORD
DEC 6, 1846
ERECTED 1960
BY TROOP 25

M
T

History

Erected 1960 by Pomerene, Arizona LDS Boy Scout Troop 25.

Credits

See <http://www.hmdb.org/Marker.asp?Marker=28299> This page originally submitted on 7 March 2010 by Bill Kirchner of Tucson, Arizona. • Syd Whittle was the editor who published this page.